

What's New: Web Intelligence XI Release 2

Increased Flexibility and Simplicity

BusinessObjects™ XI Release 2 provides a further set of enhancements to the world's leading integrated query and analysis tool. This release builds on the unique web-based interactivity capabilities of BusinessObjects Web Intelligence™ XI, providing greater simplicity and flexibility to those carrying out ad hoc report creation and those consuming or interacting with reports.

Web Intelligence XI delivers:

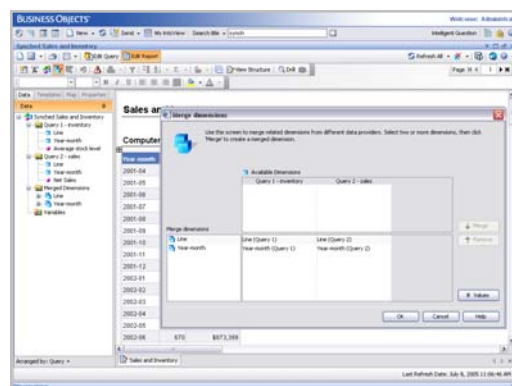
- More powerful queries
- Enhanced interactivity and analysis
- Increased trust in information

Additionally, this release provides the opportunity for BusinessObjects Desktop Intelligence™ customers to extend or enhance their business intelligence by deploying Web Intelligence.

More Powerful Queries

The flexibility available to those creating or editing documents is further improved in BusinessObjects XI Release 2.

Users are now able to bring together information from different sources (for example their sales and inventory databases) into a single report, synchronize it across preferred dimensions—for example time or product code—and then explore it as if it were a single set data. This capability extends to the ability to bring together both OLAP and relational based data in a single report ensuring users can get the insight they need from wherever it is stored.



Users can easily synchronize data from different sources.

Those creating queries can gain further flexibility through the ability to limit the results of a query to a ranked subset—for example return only the top 50 values for a particular measure. This will save time and resources.

Additional new capabilities for those creating or editing queries include:

- Combine queries using the 'union,' 'intersect,' and 'minus' commands
- Sub queries to further refine the data returned
- Edit the SQL generated by Web Intelligence, thus optimizing the data returned

Enhanced Interactivity and Analysis

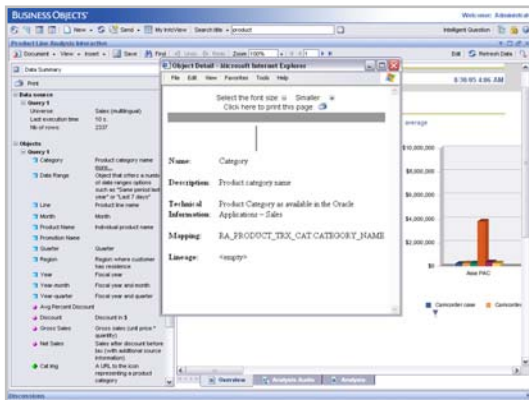
The Web Intelligence interactive viewing framework offers your end users innovative on-report analysis capabilities, directly within their web report consumption environment. BusinessObjects XI Release 2 delivers further improvements for both report consumers and those creating reports.

Information can be more easily analyzed and formatted using the new data ranking capability, enabling a user to display the specific subset of data he or she is interested in. For example, the top 10 performing products based on net sales. You can achieve even greater control of how data is displayed via custom sorting of data. For example, when monthly data is stored in a database alphabetically, Web Intelligence can display it in an accurate chronological form.

Additionally, the new advanced formula language functions available to users will allow them to carry out more sophisticated analysis in a simple and straight forward manner. For example as using the 'running sum' formula to show the cumulative cost of a process displayed by financial period.

Increased Trust in Information

Web Intelligence provides users with access to report metadata such as the definition of measures used—for example, the formula to calculate revenue—or which data filters have been applied, ensuring better information familiarity, context, and trust.



Improved trust in information with data lineage.

Now, using metadata from BusinessObjects Data Integrator, Web Intelligence takes this further with ability to understand where the data has come from, all the way down to the source system. Additionally, users can understand any business rules or transformations that have been applied. This complete view of data lineage increases trust for users who must have a full picture of where their data has come from and how it has been manipulated

Flexible Deployment Options

For existing BusinessObjects Desktop Intelligence customers, Web Intelligence now offers the opportunity to convert full-client deployments to the web. This will increase the number and range of users who can access and analyze trusted information. To ensure the investment made in Desktop Intelligence deployments is protected, automated tools are available to convert existing documents to the Web Intelligence format.

As a result, organizations will have the option of continuing to use the full client, switching to Web Intelligence, or combining both products within deployment. For more information, please see the Business Objects white paper entitled: *Determining Query and Analysis End-User Requirements with BusinessObjects XI Release 2.*

www.businessobjects.com

Copyright © 2005 Business Objects. All rights reserved. Part # WS035-A